

ShOpt.jl: A Julia Package for Empirical Point Spread Function Characterization of JWST NIRCam Data

Edward Berman ¹¶ and Jacqueline McCleary ¹¶

¹ Northeastern University, USA ¶ Corresponding author

DOI: [10.21105/joss.06144](https://doi.org/10.21105/joss.06144)

Software

- [Review](#) 
- [Repository](#) 
- [Archive](#) 

Editor: [Ivelina Momcheva](#)  

Reviewers:

- [@kevinmicha](#)
- [@jpiere14](#)
- [@aymgal](#)

Submitted: 28 September 2023

Published: 09 August 2024

License

Authors of papers retain copyright and release the work under a Creative Commons Attribution 4.0 International License ([CC BY 4.0](https://creativecommons.org/licenses/by/4.0/)).

In partnership with



This article and software are linked with research article DOI [10.3847/1538-3881/ad6a0f](https://doi.org/10.3847/1538-3881/ad6a0f), published in the *Astronomical Journal*.

Summary

When astronomers capture images of the night sky, several factors – ranging from diffraction and optical aberrations to atmospheric turbulence and telescope jitter – affect the incoming light. The resulting distortion and blurring are summarized in the image’s point spread function (PSF), the response of an optical system to an idealized point source. The PSF can obscure or even mimic the astronomical signal of interest, making its accurate characterization essential. By effectively modeling the PSF, we can predict image distortions at any location and proceed to deconvolve the PSF, ultimately reconstructing distortion-free images.

The PSF characterization methods used by astronomers fall into two main classes: forward-modeling approaches, which use physical optics propagation based on models of the optics, and empirical approaches, which use stars as fixed points to model and interpolate the PSF across the rest of the image. (Stars are essentially point sources before their light passes through the atmosphere (when observing from the ground) and telescope, so the shape and size of their surface brightness profiles define the PSF at that location.) Empirical PSF characterization proceeds by first cataloging the observed stars, separating the catalog into validation and training samples, and interpolating the training stars across the field of view of the camera. After training, the PSF model can be validated by comparing the reserved stars to the PSF model’s prediction.

Shear Optimization with ShOpt.jl introduces modern techniques, tailored to James Webb Space Telescope (JWST) NIRCam imaging, for empirical PSF characterization across the field of view. ShOpt has two modes of operation: approximating stars with analytic profiles, and a more realistic pixel-level representation. Both modes take as input a catalog with image cutouts – or “vignettes” – of the stars targeted for analysis.

Statement of need

Empirical PSF characterization tools like Point Spread Function Extractor (PSFex, [Bertin, 2011](#)) and Point Spread Functions in the Full Field of View (PIFF, [Jarvis et al., 2020](#)) are widely popular in astrophysics. However, the quality of PIFF and PSFex models tends to be quite sensitive to the parameter values used to run the software, with optimization sometimes relying on brute-force guess-and-check runs. PIFF is also notably inefficient for large, well-sampled images, taking hours in the worst cases. The JWST’s Near Infrared Camera (NIRCam) offers vast scientific opportunities (e.g. [Casey, Kartaltepe, et al., 2023](#)); at the same time, this unprecedented data brings new challenges for PSF modeling:

- (1) Analytic functions like Gaussians are incomplete descriptions of the NIRCam PSF, as evident from Figures 1 and 2. Figure 1 shows that to get a good PSF model we need to model a large dynamic range over a large box size. Figure 2 illustrates that the residuals between an idealized forward model and a Gaussian approximation can be quite severe.

This calls for well-thought-out, non-parametric modeling and diagnostic tools that can capture the full dynamic range of the NIRCcam PSF. Sh0pt provides these models and diagnostics out of the box.

- (2) The NIRCcam detectors have pixel scales of 0.03 (short wavelength channel) and 0.06 (long wavelength channel) arcseconds per pixel (Beichman et al., 2012; Rieke et al., 2003, 2005). At these pixel scales, star vignettes need to be at least 131 by 131 pixels across to fully capture the wings of the PSFs (4-5 arcseconds). These vignette sizes are 3-5 times larger than the ones used in surveys such as DES (Jarvis et al., 2020) and SuperBIT (McCleary et al., 2023) and force us to evaluate how well existing PSF fitters scale to this size. Sh0pt has been designed for computational efficiency and aims to meet the requirements of detectors like NIRCcam.

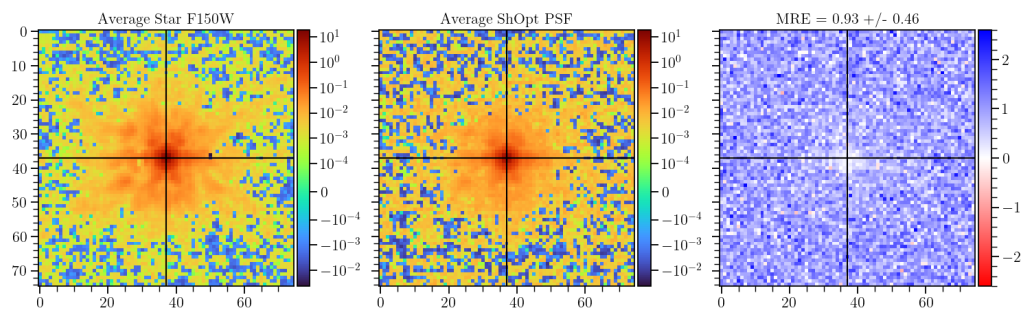


Figure 1: The plot on the left shows the average cutout of all stars in a supplied catalog. The plot in the middle shows the average point spread function model for each star. The plot on the right shows the average normalized error between the observed star cutouts and the point spread function model.

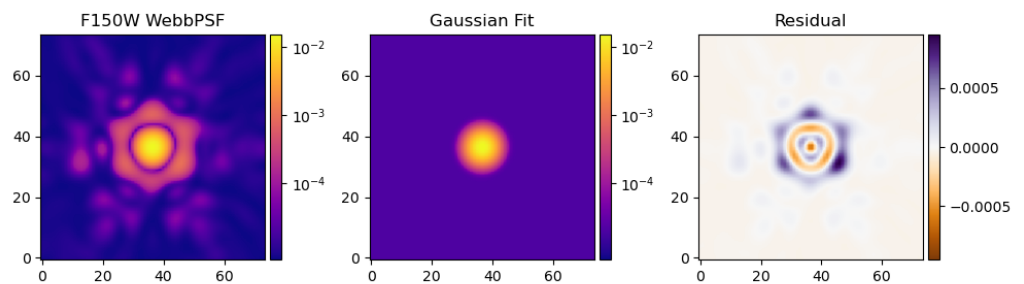


Figure 2: The plot on the left shows an idealized forward model of the NIRCcam F150W PSF made using WebbPSF. The middle shows a Gaussian approximation to the PSF. The right shows the residual between the WebbPSF model and the Gaussian approximation.

Sh0pt bridges the speed of PSFex with the features of PIFF using fewer configurable hyperpa-

rameters. Sh0pt employs a number of techniques to optimize the speed of the program. First and foremost, Sh0pt is equipped with support for multithreading. Polynomial interpolation is used for handling PSF variations across the field of view. The polynomials given to each basis element of the PSF are independent of one another and therefore can be distributed to different CPU threads to be run in parallel. Sh0pt also introduces new methods for fitting both analytic profiles and pixel based profiles. If an analytic profile is used to model the PSF, then there are 3 basis elements parameterizing the model. We choose 2D elliptical Gaussians for these analytic profiles because they are cheap to compute. Moreover, we use the Limited Memory Broyden–Fletcher–Goldfarb–Shanno algorithm (LBFGS) to find these parameters. This is faster but more memory intensive than Conjugate Gradient, the algorithm used in PIFF. Moreover, the 3 basis elements are constrained to the manifold $B_2(r) \times \mathbb{R}_+$, where $B_2(r) = \{(x, y) : x^2 + y^2 < 1\}$ and $\mathbb{R}_+ = \{x : x > 0\}$. We constructed a function that maps any point in \mathbb{R}^3 into $B_2(r) \times \mathbb{R}_+$. The LBFGS algorithm uses successive iterations to converge to a solution for the 3 basis elements, and so we use this function to ensure that our update steps in LBFGS do not leave the constraint. For the pixel basis, both PIFF and PSFex approximate the PSF by minimizing the reduced χ^2 between a grid of pixels and a star vignette. PCA can quickly achieve the same purpose of approximating the input vignette without overfitting to background noise. We also provide an autoencoder mode, which uses deep learning to reconstruct the image. The weights and biases are not reset between stars, so the knowledge of how to reconstruct one star is transferred to the next. This in turn leads to fewer training iterations. Finally, Sh0pt is written in Julia. Julia uses a just in time compiler which makes it faster than interpreted languages such as Python and has shown to be a good choice for performance critical code (Stanitzki & Strube, 2021).

State of the Field

The JWST captures images at high resolution and at wavelengths of light that have been previously unexplored (Gardner et al., 2006). With these images we are seeing farther into the early universe than we ever have before. The complex optics of JWST coupled with our desire to get the most out of the incredible data have presented the community with new set of challenges that current software does not address: the need to create high-fidelity models of the point spread function for diffraction-limited images across a wide range of wavelengths. Sh0pt.jl is one attempt to solve this challenge and other teams are approaching the issue in complementary ways, as described below.

A number of JWST PSF libraries already exist, using both empirical and forward-modeling approaches. We describe them here and draw attention to their strengths and weaknesses to further motivate the development of Sh0pt.jl. As described in the statement of need, PSFex was one of the first precise and general purpose tools used for empirical PSF fitting. However, the Dark Energy Survey collaboration reported small but noticeable discrepancies between the sizes of PSFex models and the sizes of observed stars. They also reported ripple-like patterns in the spatial variation of star-PSF residuals across the field of view (Jarvis et al., 2020), which they attributed to the astrometric distortion solutions for the Dark Energy Camera.

These findings motivated the Dark Energy Survey's development of PIFF (Point Spread Functions in the Full Field of View). PIFF works in sky coordinates on the focal plane, as opposed to image pixel coordinates used in PSFex, which minimized the ripple patterns in the star-PSF residuals and the PSF model size bias. (Based on the DES findings, Sh0pt also works directly in sky coordinates.) PIFF is written in Python, a language with a large infrastructure for astronomical data analysis, for example Astropy (Astropy Collaboration et al., 2022) and Galsim (Rowe et al., 2015). The choice of language makes PIFF software more accessible to programmers in the astrophysics community than PSFex, which was first written in C in 2007 and much less approachable for a community of open source developers. One of the motivations of Sh0pt was to write astrophysics specific software in Julia, because Julia provides a good balance of readability and speed with its high-level functional paradigm and

just-in-time compiler (Stanitzki & Strube, 2021). Julia ranks behind Python, IDL, Matlab, and Fortran in full-text mentions in astronomical literature (Collaboration et al., 2022). We are optimistic that Sh0pt will demonstrate that Julia is an appealing choice for programming in astronomy despite its low adoption to date. There is also recent work on using PSFr for PSF reconstructions that has been applied to JWST data (Ding et al., 2022; Merlin et al., 2022; Santini et al., 2023; Yang et al., 2022). Similar to Sh0pt, PSFr begins its PSF modeling by stacking stars to form an initial guess. However, rather than using polynomial interpolation to address spatial variations, PSFr employs an iterative process of shifting the pixels in its PSF model. This process continues until the model can adequately represent all of the stars in the catalog. Finally, the PSF fitter STARRED (Michalewicz et al., 2023) has been shown to produce PSF models competitive with PSFr and PSFex. Like Sh0pt, STARRED puts an emphasis on computational efficiency and uses the JAX package to achieve just-in-time compilation. There is future work to be done to benchmarking all of these empirical approaches on JWST NIRCcam data.

While WebbPSF provides highly precise forward models of the JWST PSF, these models are defined for single-epoch exposures (Perrin et al., 2012, 2014). Much of the NIRCcam science is accomplished with image mosaics – essentially, the combination of single exposure detector images into a larger, deeper image. The rotation of the camera between exposures, the astrometric transformations and resampling of images before their combination into a mosaic, and the mosaic's large area all make the application of WebbPSF models to mosaics a non-trivial procedure. This has been done quite effectively (Ji et al., 2023), however, it is not as easy to reproduce compared to running an empirical characterization tool like Sh0pt.

As outlined in the state of the field, Sh0pt is a tool built with the user experience in mind that attempts to bridge the strengths of existing PSF fitters. Sh0pt's combination of speed, user friendliness, and accuracy enable the science goals of the COSMOS-Web survey, detailed below.

The COMOS-Web survey is the largest cycle 1 JWST extragalactic survey according to area and prime time allocation (Casey, Kartaltepe, et al., 2023), and covers 0.54 deg^2 (Beichman et al., 2012; Rieke et al., 2023). Among other science goals, the COMOS-Web survey will use the JWST to detect thousands of galaxies in the Epoch of Reionization ($6 \sim z \sim 11$) to create one of the highest resolution large scale structure maps of the early universe (Casey, Kartaltepe, et al., 2023). JWST data has also been used to pick out active galactic nuclei from host galaxies (Zhuang & Shen, 2023) and identify 15 candidate galaxies whose luminosities push the limits of our Λ CDM galaxy formation models (Casey, Akins, et al., 2023). These science cases all rely upon good PSF modeling and underscore the importance of Sh0pt.

Acknowledgements

This material is based upon work supported by a Northeastern University Undergraduate Research and Fellowships PEAK Experiences Award. E.B. was also supported by a Northeastern University Physics Department Co-op Research Fellowship. Support for COSMOS-Web was provided by NASA through grant JWST-GO-01727 and HST-AR-15802 awarded by the Space Telescope Science Institute, which is operated by the Association of Universities for Research in Astronomy, Inc., under NASA contract NAS 5-26555. This work was made possible by utilizing the CANDIDE cluster at the Institut d'Astrophysique de Paris. Further support was provided by Research Computers at Northeastern University. Additionally, E.B. thanks Professor David Rosen for giving some valuable insights during the early stages of this work. The authors gratefully acknowledge the use of simulated and real data from the COSMOS-Web survey in developing ShOpt, as well as many conversations with COSMOS-Web scientists.

References

- Astropy Collaboration, Price-Whelan, A. M., Lim, P. L., Earl, N., Starkman, N., Bradley, L., Shupe, D. L., Patil, A. A., Corrales, L., Brasseur, C. E., Nöthe, M., Donath, A., Tollerud, E., Morris, B. M., Ginsburg, A., Vaher, E., Weaver, B. A., Tocknell, J., Jamieson, W., ... Astropy Project Contributors. (2022). The Astropy Project: Sustaining and Growing a Community-oriented Open-source Project and the Latest Major Release (v5.0) of the Core Package. *Astrophysical Journal*, 935(2), 167. <https://doi.org/10.3847/1538-4357/ac7c74>
- Beichman, C. A., Rieke, M., Eisenstein, D., Greene, T. P., Krist, J., McCarthy, D., Meyer, M., & Stansberry, J. (2012). Science opportunities with the near-IR camera (NIRCam) on the James Webb Space Telescope (JWST). In M. C. Clampin, G. G. Fazio, H. A. MacEwen, & Jr. Oschmann Jacobus M. (Eds.), *Space telescopes and instrumentation 2012: Optical, infrared, and millimeter wave* (Vol. 8442, p. 84422N). <https://doi.org/10.1117/12.925447>
- Bertin, E. (2011). Automated Morphometry with SExtractor and PSFEx. In I. N. Evans, A. Accomazzi, D. J. Mink, & A. H. Rots (Eds.), *Astronomical data analysis software and systems XX* (Vol. 442, p. 435). <https://doi.org/10.1051/aas:1996164>
- Casey, C. M., Akins, H. B., Shuntov, M., Ilbert, O., Paquereau, L., Franco, M., Hayward, C. C., Finkelstein, S. L., Boylan-Kolchin, M., Robertson, B. E., Allen, N., Brinch, M., Cooper, O. R., Ding, X., Drakos, N. E., Faisst, A. L., Fujimoto, S., Gillman, S., Harish, S., ... Zavala, J. A. (2023). *COSMOS-web: Intrinsically luminous $z \gtrsim 10$ galaxy candidates test early stellar mass assembly*. <https://doi.org/10.48550/arXiv.2308.10932>
- Casey, C. M., Kartaltepe, J. S., Drakos, N. E., Franco, M., Harish, S., Paquereau, L., Ilbert, O., Rose, C., Cox, I. G., Nightingale, J. W., Robertson, B. E., Silverman, J. D., Koekemoer, A. M., Massey, R., McCracken, H. J., Rhodes, J., Akins, H. B., Allen, N., Amvrosiadis, A., ... Zavala, J. A. (2023). COSMOS-web: An overview of the JWST cosmic origins survey. *The Astrophysical Journal*, 954(1), 31. <https://doi.org/10.3847/1538-4357/acc2bc>
- Collaboration, T. A., Price-Whelan, A. M., Lim, P. L., Earl, N., Starkman, N., Bradley, L., Shupe, D. L., Patil, A. A., Corrales, L., Brasseur, C. E., Nöthe, M., Donath, A., Tollerud, E., Morris, B. M., Ginsburg, A., Vaher, E., Weaver, B. A., Tocknell, J., Jamieson, W., ... Contributors, A. P. (2022). The astropy project: Sustaining and growing a community-oriented open-source project and the latest major release (v5.0) of the core package*. *The Astrophysical Journal*, 935(2), 167. <https://doi.org/10.3847/1538-4357/ac7c74>
- Ding, X., Silverman, J. D., & Onoue, M. (2022). Opening the Era of Quasar-host Studies at High Redshift with JWST. *Astrophysical Journal, Letters*, 939(2), L28. <https://doi.org/10.3847/2041-8213/ac9c02>
- Gardner, J. P., Mather, J. C., Clampin, M., Doyon, R., Greenhouse, M. A., Hammel, H. B., Hutchings, J. B., Jakobsen, P., Lilly, S. J., Long, K. S., Lunine, J. I., Mccaughrean, M. J., Mountain, M., Nella, J., Rieke, G. H., Rieke, M. J., Rix, H.-W., Smith, E. P., Sonneborn, G., ... Wright, G. S. (2006). The james webb space telescope. *Space Science Reviews*, 123(4), 485–606. <https://doi.org/10.1007/s11214-006-8315-7>
- Jarvis, M., Bernstein, G. M., Amon, A., Davis, C., Lé get, P. F., Bechtol, K., Harrison, I., Gatti, M., Roodman, A., Chang, C., Chen, R., Choi, A., Desai, S., Drlica-Wagner, A., Gruen, D., Gruendl, R. A., Hernandez, A., MacCrann, N., Meyers, J., ... and, R. D. W. (2020). Dark energy survey year 3 results: Point spread function modelling. *Monthly Notices of the Royal Astronomical Society*, 501(1), 1282–1299. <https://doi.org/10.1093/mnras/staa3679>
- Ji, Z., Williams, C. C., Tacchella, S., Suess, K. A., Baker, W. M., Alberts, S., Bunker, A. J., Johnson, B. D., Robertson, B., Sun, F., Eisenstein, D. J., Rieke, M., Maseda, M. V., Hainline, K., Hausen, R., Rieke, G., Willmer, C. N. A., Egami, E., Shivaee, I., ... Sandles, L. (2023). *JADES + JEMS: A detailed look at the buildup of central stellar cores and suppression of star formation in galaxies at redshifts $3 < z < 4.5$* .

- <https://doi.org/10.48550/arXiv.2305.18518>
- McCleary, J. E., Everett, S. W., Shaaban, M. M., Gill, A. S., Vassilakis, G. N., Huff, E. M., Massey, R. J., Benton, S. J., Brown, A. M., Clark, P., Holder, B., Fraisse, A. A., Jauzac, M., Jones, W. C., Lagattuta, D., Leung, J. S.-Y., Li, L., Luu, T. V. T., Nagy, J. M., ... Tam, S. I. (2023). Lensing in the blue. II. Estimating the sensitivity of stratospheric balloons to weak gravitational lensing. *The Astronomical Journal*, *166*(3), 134. <https://doi.org/10.3847/1538-3881/ace7ca>
- Merlin, E., Bonchi, A., Paris, D., Belfiori, D., Fontana, A., Castellano, M., Nonino, M., Polenta, G., Santini, P., Yang, L., Glazebrook, K., Treu, T., Roberts-Borsani, G., Trenti, M., Birrer, S., Brammer, G., Grillo, C., Calabrò, A., Marchesini, D., ... Wang, X. (2022). Early Results from GLASS-JWST. II. NIRCam Extragalactic Imaging and Photometric Catalog. *Astrophysical Journal, Letters*, *938*(2), L14. <https://doi.org/10.3847/2041-8213/ac8f93>
- Michalewicz, K., Millon, M., Dux, F., & Courbin, F. (2023). STARRED: A two-channel deconvolution method with starlet regularization. *Journal of Open Source Software*, *8*(85), 5340. <https://doi.org/10.21105/joss.05340>
- Perrin, M. D., Sivaramakrishnan, A., Lajoie, C.-P., Elliott, E., Pueyo, L., Ravindranath, S., & Albert, Loic. (2014). Updated point spread function simulations for JWST with WebbPSF. In Jr. Oschmann Jacobus M., M. Clampin, G. G. Fazio, & H. A. MacEwen (Eds.), *Space telescopes and instrumentation 2014: Optical, infrared, and millimeter wave* (Vol. 9143, p. 91433X). <https://doi.org/10.1117/12.2056689>
- Perrin, M. D., Soummer, R., Elliott, E. M., Lallo, M. D., & Sivaramakrishnan, A. (2012). Simulating point spread functions for the James Webb Space Telescope with WebbPSF. In M. C. Clampin, G. G. Fazio, H. A. MacEwen, & Jr. Oschmann Jacobus M. (Eds.), *Space telescopes and instrumentation 2012: Optical, infrared, and millimeter wave* (Vol. 8442, p. 84423D). <https://doi.org/10.1117/12.925230>
- Rieke, M. J., Baum, S. A., Beichman, C. A., Crampton, D., Doyon, R., Eisenstein, D., Greene, T. P., Hodapp, K.-W., Horner, S. D., Johnstone, D., Lesyna, L., Lilly, S., Meyer, M., Martin, P., Jr., D. W. M., Rieke, G. H., Roellig, T. L., Stauffer, J., Trauger, J. T., & Young, E. T. (2003). NGST NIRCam scientific program and design concept. In J. C. Mather (Ed.), *IR space telescopes and instruments* (Vol. 4850, pp. 478–485). International Society for Optics; Photonics; SPIE. <https://doi.org/10.1117/12.489103>
- Rieke, M. J., Kelly, D. M., Misselt, K., Stansberry, J., Boyer, M., Beatty, T., Egami, E., Florian, M., Greene, T. P., Hainline, K., Leisenring, J., Roellig, T., Schlawin, E., Sun, F., Tinnin, L., Williams, C. C., Willmer, C. N. A., Wilson, D., Clark, C. R., ... Young, E. T. (2023). Performance of NIRCam on JWST in flight. *Publications of the Astronomical Society of the Pacific*, *135*(1044), 028001. <https://doi.org/10.1088/1538-3873/acac53>
- Rieke, M. J., Kelly, D., & Horner, S. (2005). Overview of James Webb Space Telescope and NIRCam's Role. In J. B. Heaney & L. G. Burriesci (Eds.), *Cryogenic optical systems and instruments XI* (Vol. 5904, pp. 1–8). <https://doi.org/10.1117/12.615554>
- Rowe, B. T. P., Jarvis, M., Mandelbaum, R., Bernstein, G. M., Bosch, J., Simet, M., Meyers, J. E., Kacprzak, T., Nakajima, R., Zuntz, J., Miyatake, H., Dietrich, J. P., Armstrong, R., Melchior, P., & Gill, M. S. S. (2015). GalSim: The modular galaxy image simulation toolkit. *Astronomy and Computing*, *10*, 121–150. <https://doi.org/10.1016/j.ascom.2015.02.002>
- Santini, P., Fontana, A., Castellano, M., Leethochawalit, N., Trenti, M., Treu, T., Belfiori, D., Birrer, S., Bonchi, A., Merlin, E., Mason, C., Morishita, T., Nonino, M., Paris, D., Polenta, G., Rosati, P., Yang, L., Boyett, K., Bradac, M., ... Wang, X. (2023). Early Results from GLASS-JWST. XI. Stellar Masses and Mass-to-light Ratio of $z > 7$ Galaxies. *Astrophysical Journal, Letters*, *942*(2), L27. <https://doi.org/10.3847/2041-8213/ac9586>
- Stanitzki, M., & Strube, J. (2021). Performance of julia for high energy physics analyses. *Com-*

puting and Software for Big Science, 5(1). <https://doi.org/10.1007/s41781-021-00053-3>

Yang, L., Morishita, T., Leethochawalit, N., Castellano, M., Calabrò, A., Treu, T., Bonchi, A., Fontana, A., Mason, C., Merlin, E., Paris, D., Trenti, M., Roberts-Borsani, G., Bradac, M., Vanzella, E., Vulcani, B., Marchesini, D., Ding, X., Nanayakkara, T., ... Wang, X. (2022). Early Results from GLASS-JWST. V: The First Rest-frame Optical Size-Luminosity Relation of Galaxies at $z > 7$. *Astrophysical Journal, Letters*, 938(2), L17. <https://doi.org/10.3847/2041-8213/ac8803>

Zhuang, M.-Y., & Shen, Y. (2023). *Characterization of JWST NIRCам PSFs and implications for AGN+host image decomposition*. <https://doi.org/10.48550/arXiv.2304.13776>